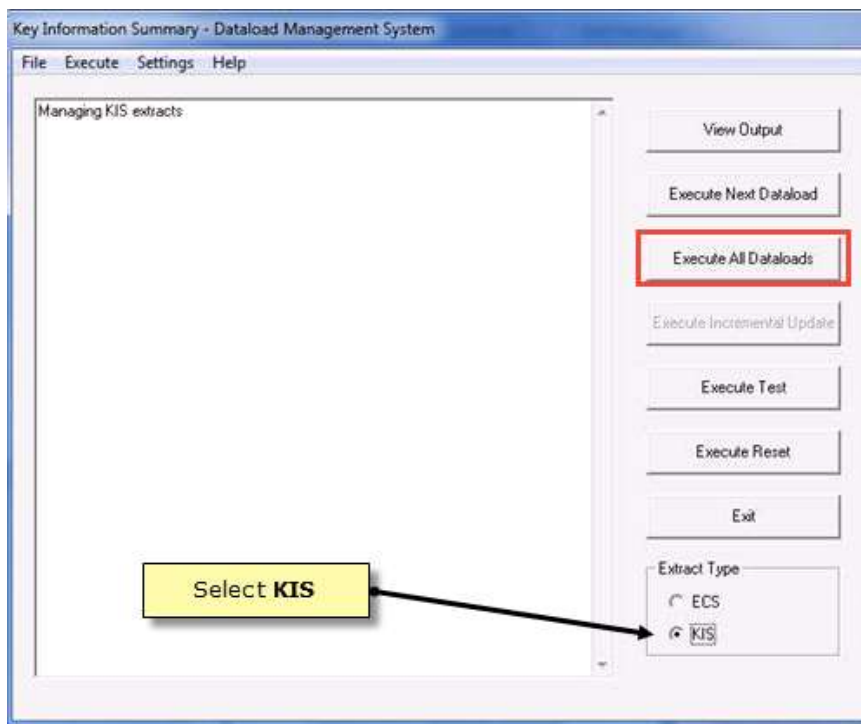


## Key Information Summary (KIS) Training - Vision

### Pre-Course Information

The GP practice should run a KIS Extraction prior to training taking place so that patient data is populated in the KIS screen.

1. From the Vision front menu, select **Modules – ECS Initial Extraction**.
2. The Dataload Management System screen is displayed, select **KIS** then click **Execute All Dataloads**.



3. A status bar appears indicating that the data is being extracted. This should take less than half an hour and can run in the background.
4. Once the full extract is complete, a confirmation message appears stating that there are no more patients to process.
5. Select **Exit** to close the KIS Initial Extraction screen.

---

**Note** - The **Execute All Dataloads** option is not available once the initial extract has been run. Occasionally, you may be asked to resend the full patient data again. This should only be done when requested.

---